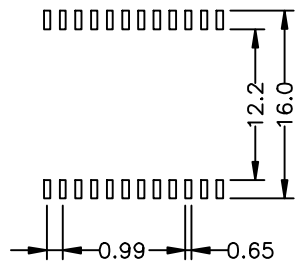
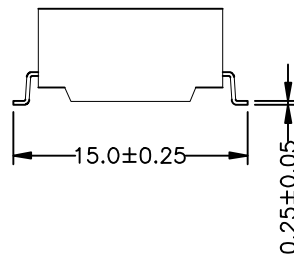
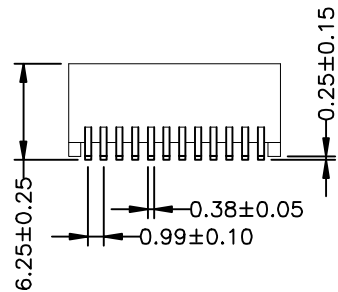
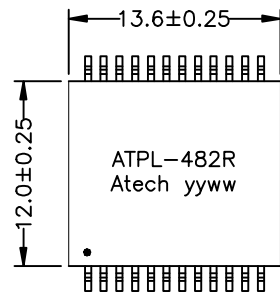


Mechanical Dimension:



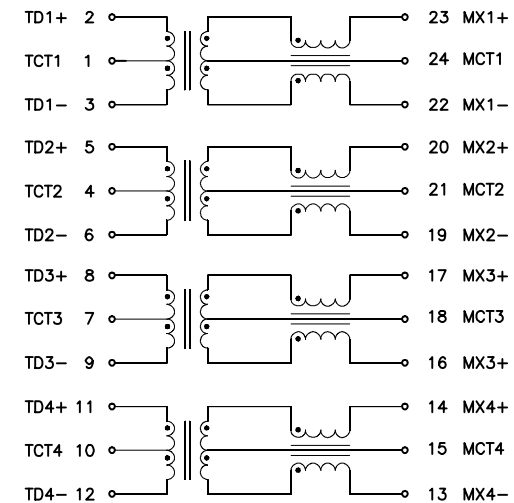
SUGGESTED PAD LAYOUT

Unless otherwise specified all tolerances are :  $\pm 0.25$

Feature :

- ◆ Compliant with IEEE802.3 Draft Standards
- ◆ Supports 4 pairs of Category 6a UTP cables
- ◆ Low profile surface mount packaging designed for reflow process(225° peak)
- ◆ Supports specific PHY vendors to fine-tune magnetic on board
- ◆ RoHS compliant
- ◆ LAN and Ethernet Applications


Circuit Schematic :



								TITLE 10GBASE-T TRANSFORMER	
								DWG. NO. ATPL-482R	
RELEASE		07/13/2015	SHIRLEY	BETTY	BETTY	UNITS: M/M	SAFETY		SHEET 1 of 2
NO:	DESCRIPTION	DATE	BY	CHK	APPD	DATE	P/N:	DRAW SHIRLEY	
REVISIONS						07/13/15			

Electrical Specification :

Parameters	Condition	Min.	Typ.	Max.	Unit
Impedance	100				Ω
Inductance(OCL)	100K@100mV	280			uH
Insertion Loss	0.1~1MHz			-3.0	dB
	1~200MHz			-1.2	
	200~300MHz			-1.5	
	300~400MHz			-2.0	
	400~500MHz			-3.0	
Return Loss	0.3~100MHz	-18			dB
	100~200MHz	-16			
	200~300MHz	-12			
	300~400MHz	-10			
	400~500MHz	-8			
Common to Differential Mode Rejection	1~500MHz	-25			dB
Differential to Common Mode Rejection	1~500MHz	-25			dB
Crosstalk	1~500MHz	-25			dB
Hipot	1500Vrms		60		SEC

							TITLE 10GBASE-T TRANSFORMER	
							DWG. NO. ATPL-482R	
RELEASE		07/13/2015	SHIRLEY	BETTY	BETTY	UNITS: M/M	SAFETY	
NO:	DESCRIPTION	DATE	BY	CHK	APPD	DATE	P/N:	SHEET 2 of 2
REVISIONS						07/13/15	DRAW SHIRLEY	